



# Animal Health and Welfare Wales (AHWW)

## Gwaredu BVD

Autumn 2021

WE HAVE SCREENED  
**8,896 (80.9%)**  
HERDS SO FAR (AUGUST 2021)

WE HAVE IDENTIFIED  
**796**  
PI'S SO FAR (AUGUST 2021)

Typically, positive Gwaredu BVD youngstock screens have between one and five animals with BVD antibodies. The more animals with BVD antibodies, the higher the chance that a BVD infection is present on your farm.

Antibodies in the samples taken are a result of:

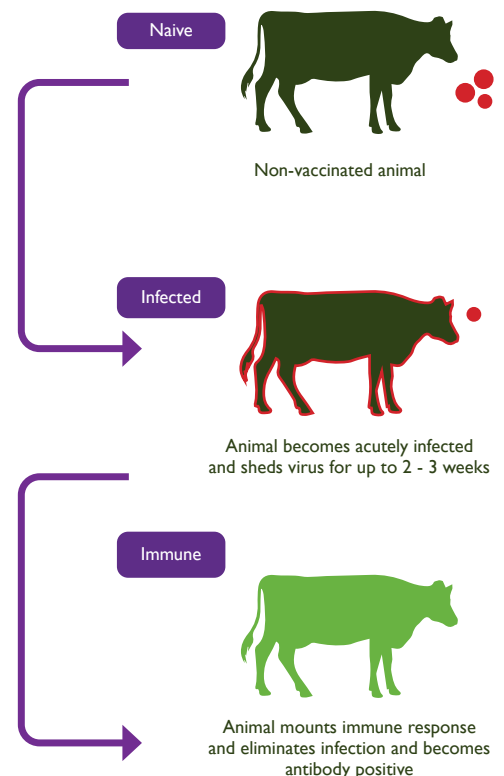
- Infection from the virus.
- Antibodies from colostrum.
- Vaccination (if vaccinated animals were sampled in error).

Next steps if you have antibody positive animals:

1. Conduct a PI Hunt.
2. Repeat the test after a short time period (typically 2 months - funded by alternative sources).
3. Wait until the next Gwaredu BVD screen for repeat.
4. Review with your vet how BVD might have entered your farm.

Discuss with your vet to decide the best option for you.

### How cattle become antibody positive



If you receive a positive result, you are not alone – 28% of farms who screen with us have a positive result. There is a lot that we can do to support you throughout this process - eradicating BVD from your farm is achievable.

The Gwaredu BVD team is here to help and support you.



For further information contact us or speak to your vet:

[www.ahww.cymru](http://www.ahww.cymru)

[gwaredubvd@colegsirgar.ac.uk](mailto:gwaredubvd@colegsirgar.ac.uk)

01554 748 576

